



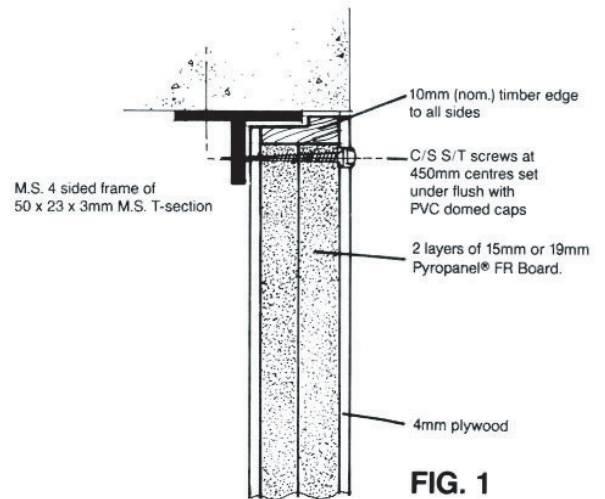
ACCESS PANELS: 1 HOUR RATED

Usage: To Provide removable panel on duct or access openings for service or inspection.

Approved: In 1HR steel or timber stud walls and all masonry walls.

Design: SFPI-MOD is available in a concealed type steel frame as illustrated, or in pressed zincanneal steel frames (refer Fig.2) of selected profile. Panels are 38mm or 48mm thick with optional facings of plywood, MDF Board, Formica fire retardant grade, laminate, Zincanneal or Marviplate clad steel. Heat activated expanding seals for 'hot' smoke protection are optional.

Available as factory fitted assemblies or may be site fitted to measure.



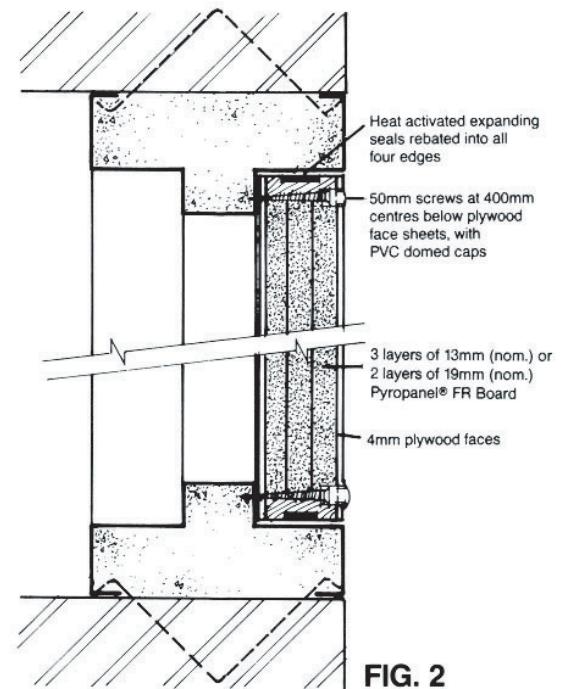
ACCESS PANELS: 2 HOUR RATED

Usage: Designed to protect duct or access openings from spread of smoke, hot gasses and fire. These panels provide ready access by simply removing screw fixings.

Approved: For use in 2HR steel stud and fire rated masonry walls.

Design: FP2-S11-MOD is available in pressed zincanneal steel frame as shown, but may also be fitted in frame of steel for concealed flush mounting, as shown in Fig.1 above.

Optional facings as for SFPI-MOD design are available.

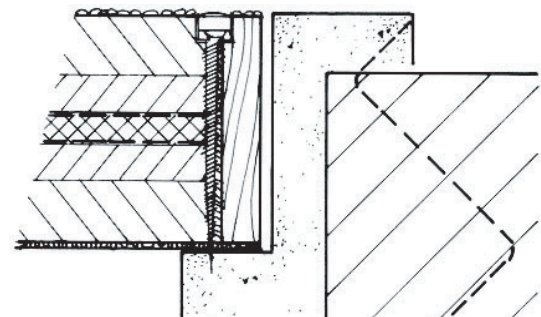


ACCESS PANELS: 3&4 HOUR RATED

Usage: For fire protection in high fire risk openings.

Approved: For use in all fire rated masonry walls, aerated concrete or 'Lok-Blok' brand gypsum block walls.

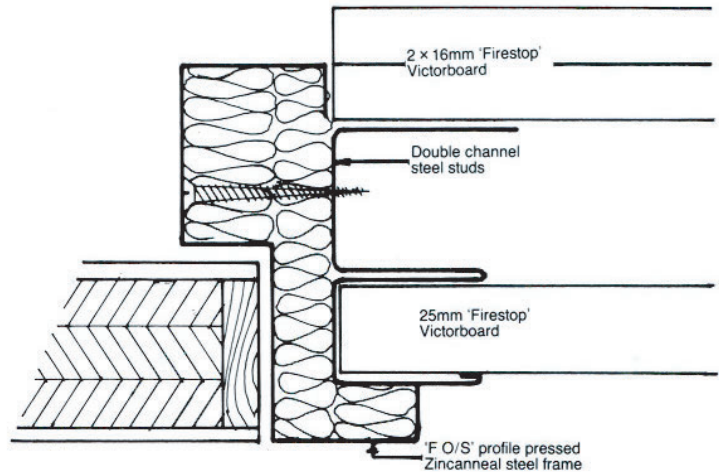
Design: SFP4 is presented in pressed zincanneal steel frames to selected profile of single or double rebate. Facing is an acrylic/granular coating of proprietary brand, factory applied thus providing good protection from weather. Panels are 60mm (nom.) thickness and are screw fixed with 10g self-tapping plated steel screws at 450mm centers.





ACCESS PANELS FOR LIFT SHAFT WALLS:
1 HOUR & 2 HOUR RATED

- Usage: Cavity shaft wall where temporary access may be required.
- Approved: For use in Australian Gypsum Ltd 2HR rated cavity shaft wall.
- Design: FFH4 with fire retardant treated plywood facings and available in pressed steel frame of profile, as illustrated. Panels may be screw fixed or hinged and locked with steel 'Budget' locks. In addition, 'cold' and 'hot' smoke seals are available where specified. Generally supplied as factory fitted assemblies, to be screw fixed into pre-formed and measured openings.

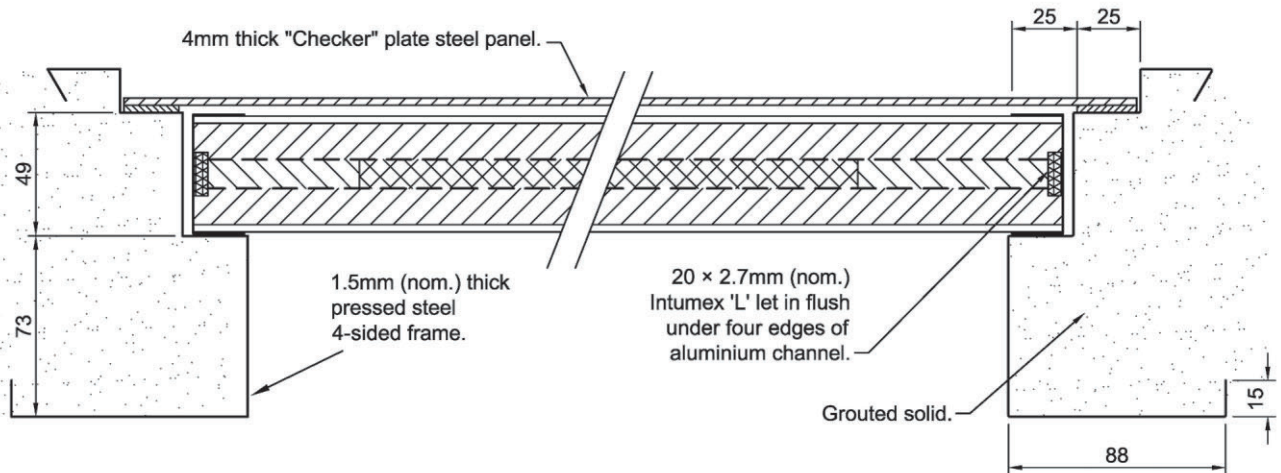


FIRE RATED FLOOR HATCH
4 HOUR CONSTRUCTION

Specifically designed for lift motor room and plant room hatches. These units (which incorporate a checker plate steel cover plate) are manufactured to size, including the special profile; four sided pressed zincanneal steel frame suitable for casting into concrete floors. The fire resistant panels are faced with non-combustible sheet material and have

anodised aluminium channel edges to provide a robust lightweight floor hatch.

The fixing is optional as screws, masonry anchors or hinged, with recessed finger grips provided. Finger holes are provided in the checker plate steel cover for ease of removal. Pair hatches are also available with removable support pillion. Full details available on request from Pyropanel®.



Photograph of panel with penetration after 90 minutes of fire exposure at BRANZ laboratory.

WALL INFILL PANEL
UP TO 3 HOUR RATING

These large screw fixed panels are available to suit wall penetrations up to 2400 x 1200mm and have been tested with pipe penetrations and with facings of plywood, galvanized steel and Marvplate.

Because the core used in these Pyropanel® panels is very stable, even under extreme conditions, little or no

shrinkage or movement is evident and the penetrations maintain stability.

Full details on method of fixing and cladding any penetrations can be obtained from your local Pyropanel® licensee.

Edges of panels can be fitted with heat activated expanding seals to prevent hot gases from penetrating the installation.